

NOTES

ALL PRESTRESSING STRANDS SHALL BE 7-WIRE LOW-RELAXATION GRADE 270 STRANDS AND SHALL CONFORM TO AASHTO M203 EXCEPT FOR SAMPLING REQUIREMENTS WHICH SHALL BE IN ACCORDANCE WITH THE STANDARD SPECIFICATIONS.

APPLY EPOXY PROTECTIVE COATING TO BOTH SIDES AND BOTTOM OF END 2 FEET OF GIRDER AND END OF GIRDER SURFACES AS INDICATED IN ELEVATION VIEW.

EMBEDDED PLATE "B-1" SHALL BE GALVANIZED IN ACCORDANCE WITH THE STANDARD SPECIFICATIONS.

ANCHOR STUDS SHALL CONFORM TO AASHTO M169 GRADES 1010 THROUGH 1020 OR APPROVED EQUAL, AND SHALL MEET THE TYPE "B" REQUIREMENTS OF SUBSECTION 7.3 OF THE ANSI/AASHTO/AWS D1.5 BRIDGE WELDING CODE.

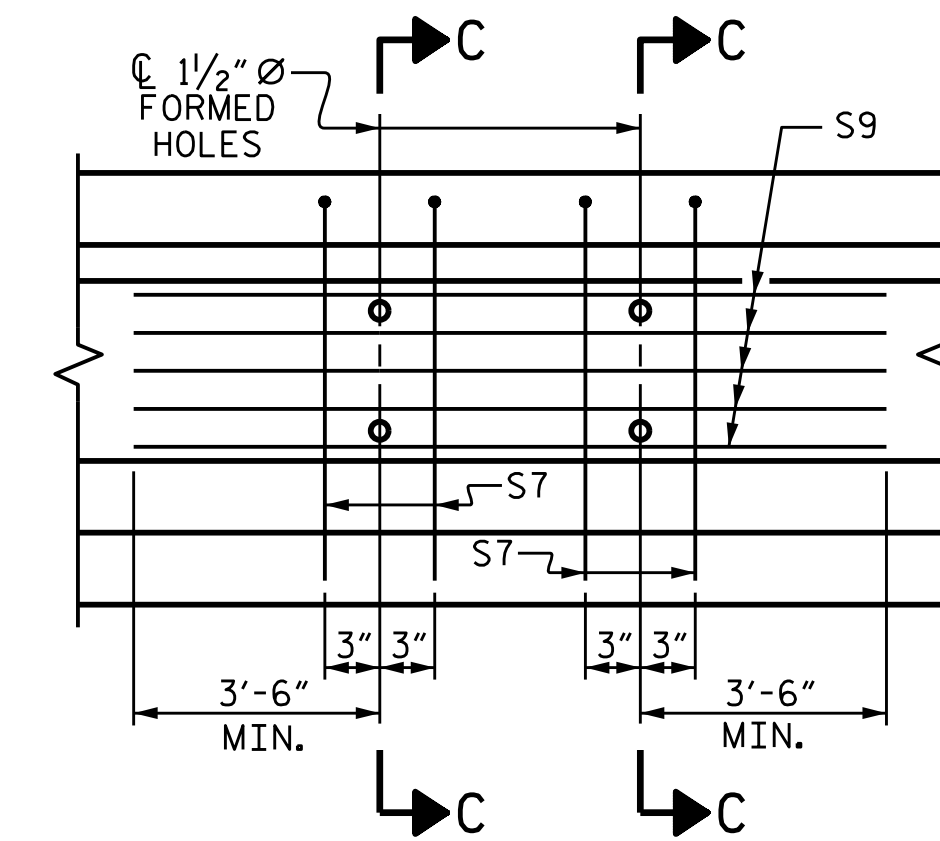
ALL PRESTRESSED STRANDS SHALL BE CUT FLUSH WITH THE GIRDER ENDS.

THE TRANSFER OF LOAD FROM THE ANCHORAGES TO THE GIRDER SHALL BE DONE WHEN CONCRETE HAS REACHED A COMPRESSIVE STRENGTH OF NOT LESS THAN ---- PSI.

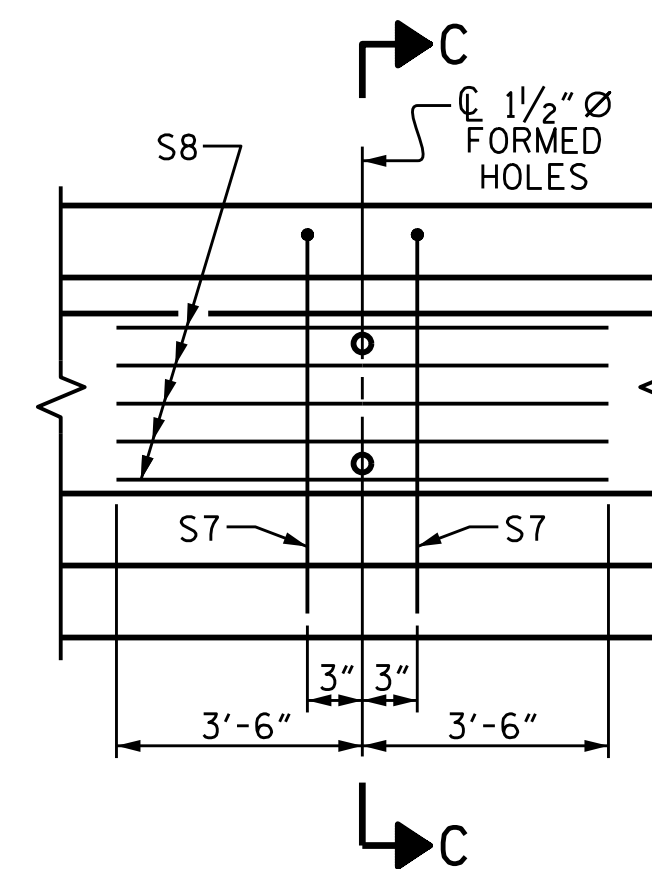
DEPENDING ON THE TYPE OF SYSTEM USED TO SUPPORT THE DECK SLAB FORMS, PRESET ANCHORS MAY BE NECESSARY IN THE PRESTRESSED CONCRETE GIRDER.

THE TOP SURFACE OF THE GIRDER SHALL BE RAKED TO A DEPTH OF 1/4" EXCEPT IN THE AREA BETWEEN THE STIRRUP AND THE EDGE OF THE GIRDER.

WHEN DRAPED STRANDS ARE DETAILED, THE LONGITUDINAL LOCATION OF THE HOLD DOWN DEVICES SHALL BE WITHIN 6" OF THE LOCATION SHOWN AND THE CENTER OF GRAVITY OF THE GROUP OF DRAPED STRANDS SHALL BE LOCATED WITHIN 1/2" OF THE THEORETICAL LOCATION SHOWN.

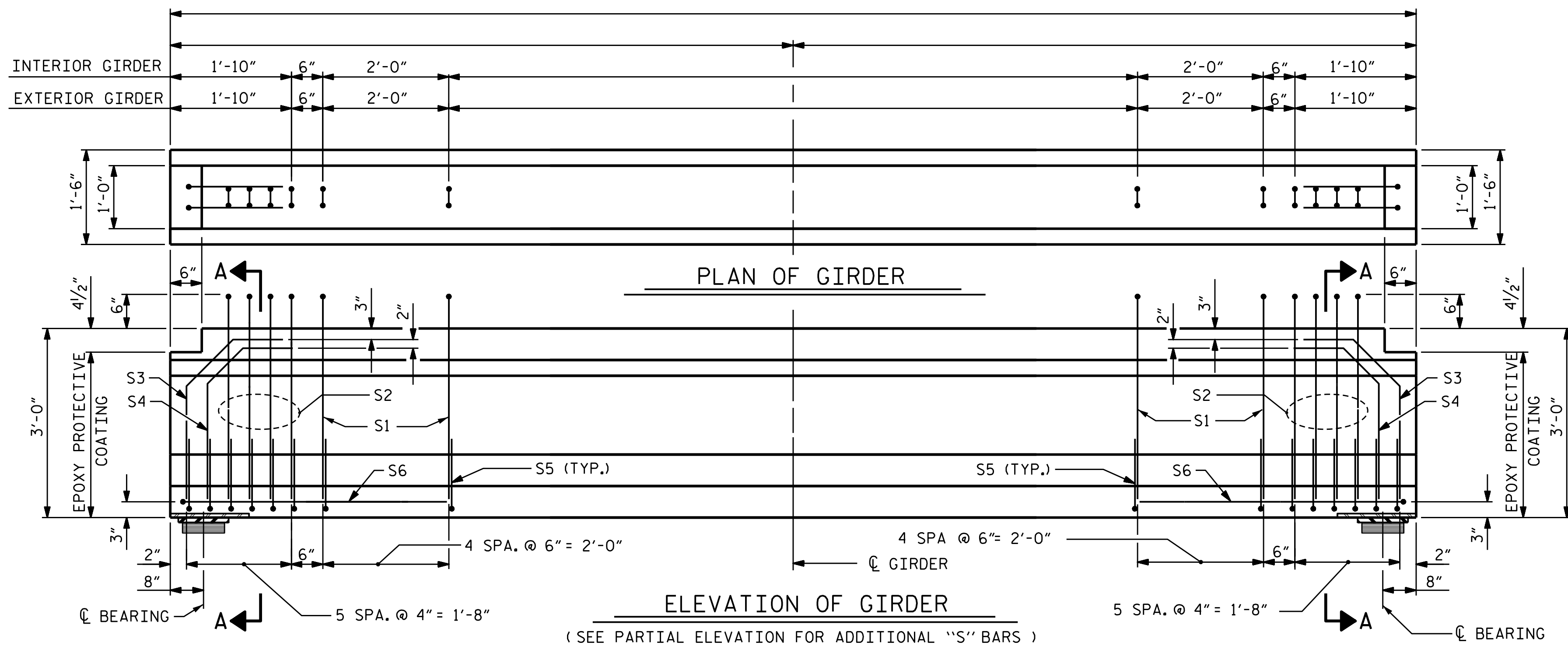
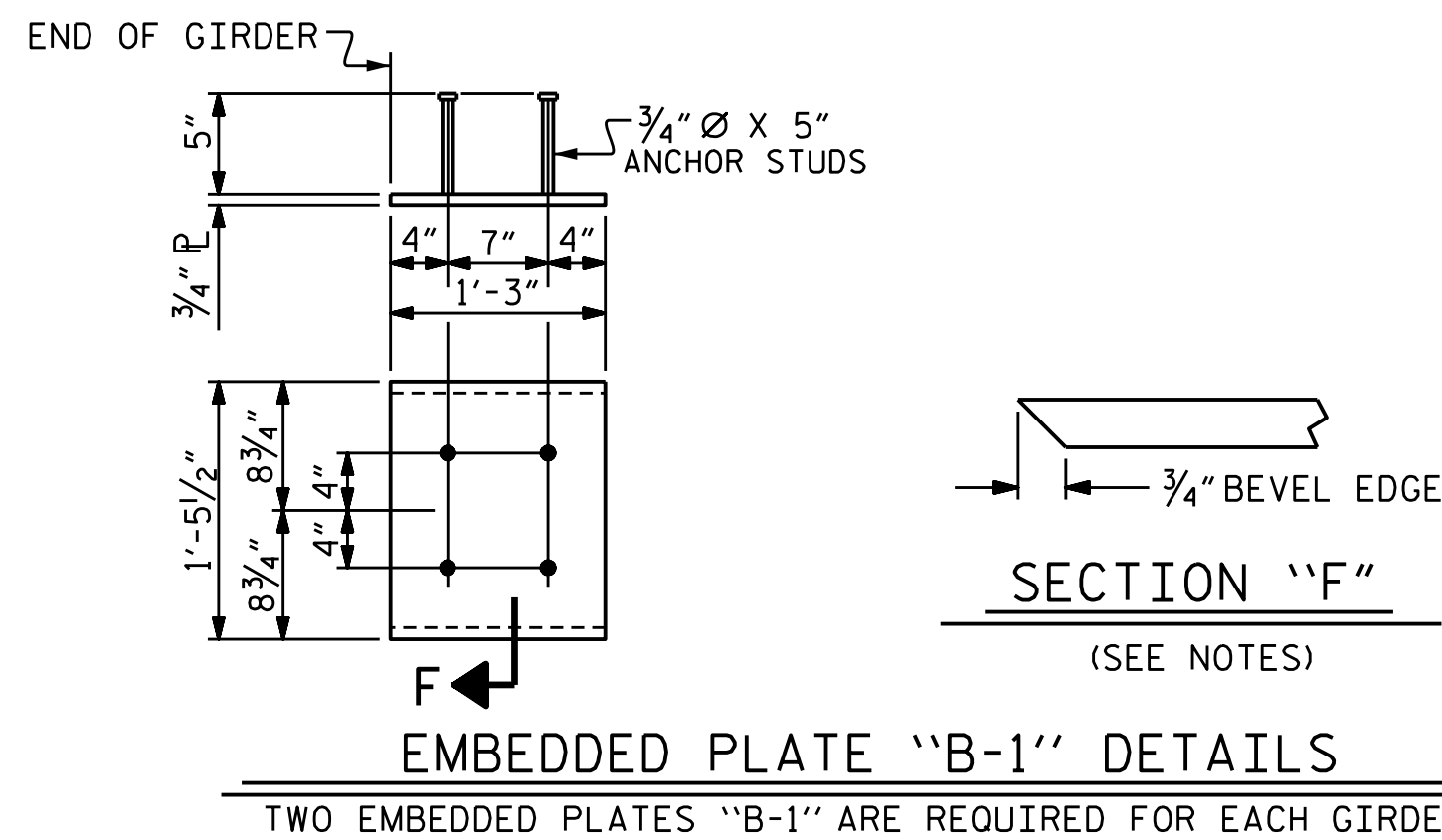


SHOWING INTERMEDIATE DIAPHRAGM
REINFORCING STEEL FOR GIRDER Nos. -----
(FOR INTERIOR GDRS. WITH SKEW < 70° OR SKEW > 110°)



PARTIAL ELEVATION

SHOWING INTERMEDIATE DIAPHRAGM
REINFORCING STEEL FOR GIRDER Nos. -----
(FOR ALL EXTERIOR GIRDERS AND
INTERIOR GIRDERS WITH $70^\circ < \text{SKEW} < 110^\circ$)



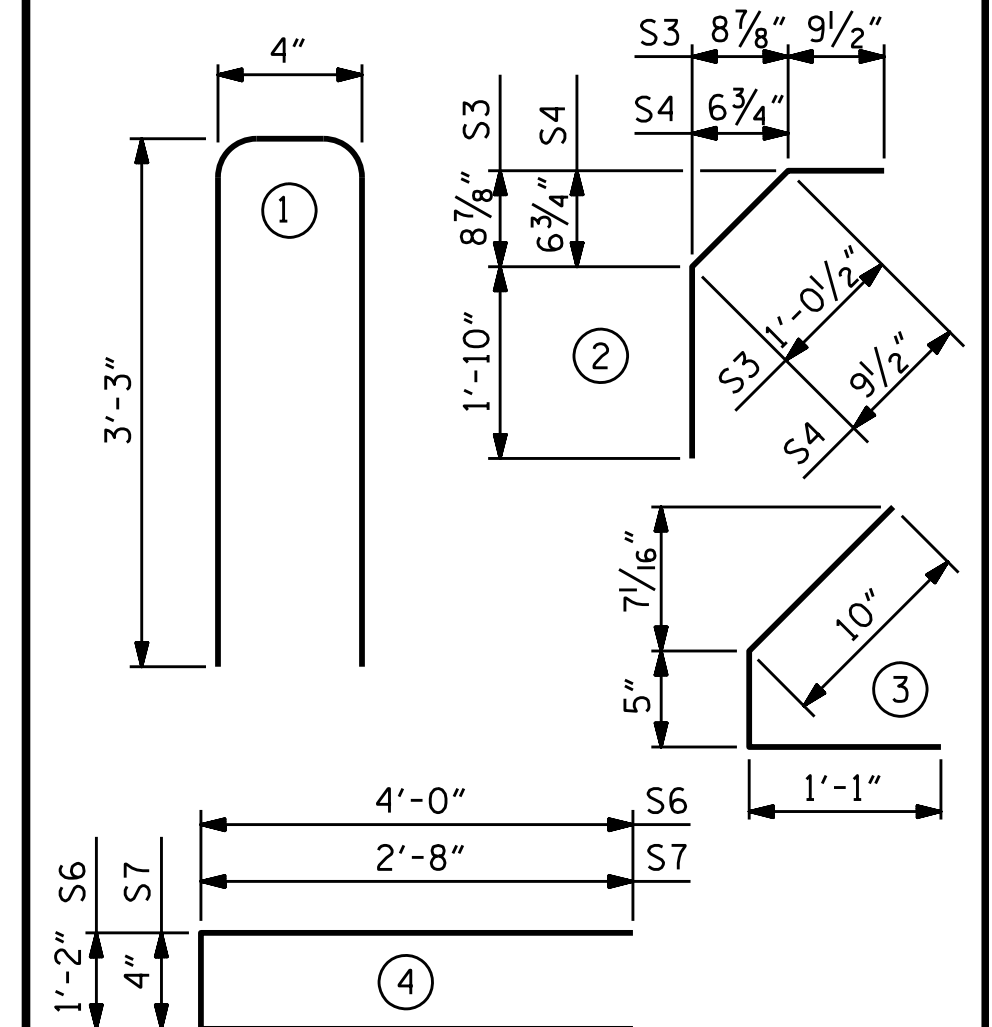
0.6" Ø L. R. GRADE 270 STRANDS

AREA (SQUARE INCHES)	ULTIMATE STRENGTH (LBS. PER STRAND)	APPLIED PRESTRESS (LBS. PER STRAND)
0.217	58,600	43,950

REINFORCING STEEL FOR ONE GIRDER					
BAR	NUMBER	SIZE	TYPE	LENGTH	WEIGHT
R.	S1	#4	1	6'-10"	
R.	S1	#4	1	6'-10"	
	S2	#5	1	6'-10"	57
	S3	#5	2	3'-8"	15
	S4	#5	2	3'-5"	14
	S5	#4	3	2'-4"	69
	S6	#4	4	9'-2"	12

EXTERIOR GDR.	S7	#5	4	5'-8"	
INTERIOR GDR.	S7	#5	4	5'-8"	
EXTERIOR GDR.	S8	#4	STR	7'-0"	
INTERIOR GDR.	S	#4	STR		

<h2 style="text-align: center;">BAR TYPES</h2>	
<p style="text-align: center;">ALL BAR DIMENSIONS ARE OUT-TO-OUT</p>	



QUANTITIES FOR ONE GIRDER			
	REINFORCING STEEL	PSI CONCRETE	0.6" Ø L. R. STANDS
	LB.	C.Y.	No.
EXTERIOR GIRDER			
INTERIOR GIRDER			

GIRDERS REQUIRED		
NUMBER	LENGTH	TOTAL LENGTH

PROJECT NO. _____
 _____ COUNTY
 STATION: _____

STATE OF NORTH CAROLINA
DEPARTMENT OF TRANSPORTATION
RALEIGH
STANDARD
AASHTO TYPE II
PRESTRESSED CONCRETE GIRDER

REVISIONS						SHEET NO.
NO.	BY:	DATE:	NO.	BY:	DATE:	
1			3			TOTAL SHEETS
2			4			

DOCUMENT NOT CONSIDERED
FINAL UNLESS ALL
SIGNATURES COMPLETED

10/19/2023
S:\DEV\Squad.D\EDS Documents\Standards\working Standards\PCG FOR 2024\pcgl_24.dgr
bbarodawala

STD. NO. PCG1